

# Ceturegel™ Basement Membrane Matrix

The basement membrane matrix is a solubilized basement membrane preparation extracted from the tumors of EHS mice rich in extracellular matrix proteins. Its main components are laminin, type IV collagen, heparan sulfate proteoglycan (HSPG) and nestin, as well as growth factors such as TGF beta, EGF, IGF, FGF, tissue plasminogen activator and other growth factors contained in EHS tumors.

The Ceturegel™ basement membrane matrix developed and produced by YEASEN does not contain LDEV (Lactate Dehydrogenase Enhancing Virus) and with ultra-low endotoxin content. The critical mycoplasma detection in each batch ensures no mycoplasma contamination. The profile includes different types such as basic concentration, high concentration, and reduced growth factor.



## Application

01 2D Culture Support

02 Migration/Invasion

03 Biochemical Research

04 3D & Organoid Culture

05 Angiogenesis

06 In Vivo Tumor Formation

## Product Feature



### High Safety

No LDEV (lactate dehydrogenase elevating virus)



### Multiple Concentration

The concentration range from 8 to 20 mg/ml



### Batch Consistency

Strict process through the whole product life cycle including the production, quality, warehouse etc



### Low Endotoxin

Endotoxin content <8 EU/ml



### Contamination Control

Adhere to the rigorous residue quality standards of mycoplasmas, bacteria, and fungi



### High Yield

>30L per single batch



### Wide Compatibility

Compatible with almost all types of cell culture medium

## Application Validation

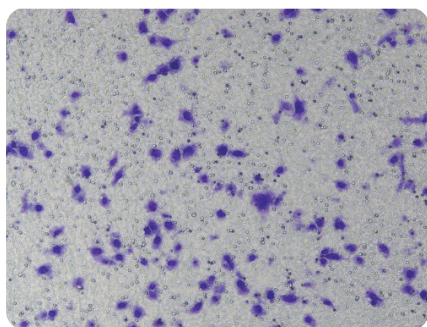


Figure 1: The representative image of HepG2 cell stained with crystal violet after invasion

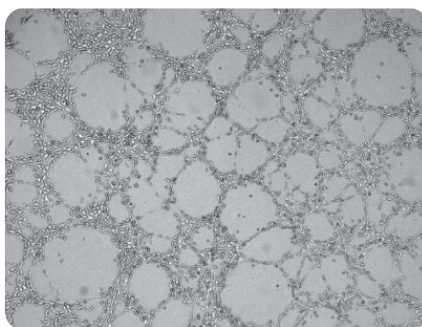


Figure 2: The representative bright field and fluorescent images of HUVEC cell angiogenesis

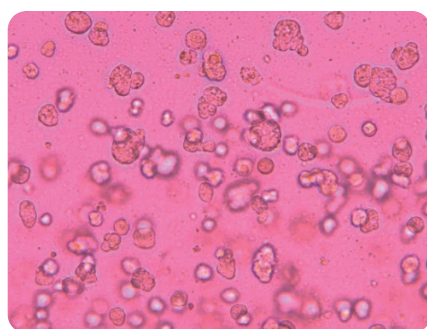
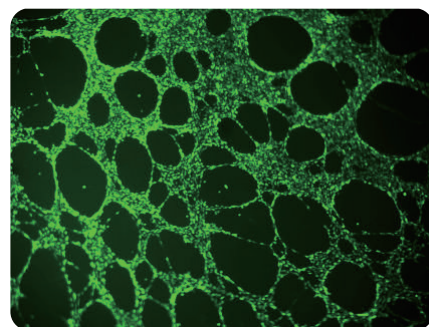


Figure 3: The image of 3D culture of HepG2 cell for 4 days



Figure 4: The compared result of HepG2 subcutaneous tumor model establishment with/without YEASEN matrix

## Order Information

Product Type	Product Name	Catalog No.	Package
Basic Concentration (8~12mg/mL)	Ceturegel™ Matrix LDEV-Free	40183ES08	5 mL
		40183ES10	10 mL
Growth Factor Reduced	Ceturegel™ Matrix GFR, LDEV-Free	40185ES08	5 mL
		40185ES10	10 mL
High Concentration (≥18mg/mL)	Ceturegel™ Matrix GFR, Phenol Red-Free, LDEV-Free	40186ES08	5 mL
		40186ES10	10 mL
High Concentration (≥18mg/mL)	Ceturegel™ Matrix High Concentration, LDEV-Free	40187ES08	5 mL
		40187ES10	10 mL

**Yeasen Biotechnology (Shanghai) Co., Ltd**

WEB: [www.yeasenbiotech.com](http://www.yeasenbiotech.com)

Tel: +86-021-34615995

E-mail: [overseas@yeasen.com](mailto:overseas@yeasen.com)

ADD: No.166,Tianxiong Road,Pudong New Area,Shanghai,201318