



Ver. HB221107

GoldBand™ 100bp DNA ladder

Product description

The GoldBand™ 100 bp DNA ladder consists of twelve double-stranded DNA fragments (100, 200, 300, 400, 500, 600, 700, 800, 900, 1,000, 1,200, 1,500 bp). Since this product is premixed with 1× loading dyes, it can be used in agarose gel electrophoresis directly. The concentration of 500 bp fragment is 125 ng/5 μL, and the concentration of other fragments is 50 ng/5 μL. This product is suitable for the analysis of DNA fragments in agarose gel electrophoresis and is not recommended for polyacrylamide gel electrophoresis.

Components

Components No.	Name	10507ES60 (100T)	10507ES80 (10×100T)
10507-A	GoldBand™ 100 bp DNA ladder	500 μL	10×500 μL
10507-B	5×DNA Loading buffer	1 mL	10×1 mL

Specifications

Gel type	Agarose
Product type specs	Mixture of DNA molecular weight standards
Size range	100bp—1500bp
Gel compatibility	Agarose gel

Shipping and Storage

The GoldBand™ 100 bp DNA ladder products are shipped with ice pack and can be stored at 2°C ~ 8°C for 6 months, or stored at -15°C ~ -25°C for 12 months. Avoid repeated freeze thawing.

Instructions

1. The loading volume of ladder is 5 μL. If gel wells are wider than the conventional, the loading volume needs to be increased appropriately.
2. It is recommended to use 1.0-2.0% Agarose, voltage 4-10 V/cm, 1× TAE (preferred) or 0.5× TBE buffer for electrophoresis.
3. Stain with nucleic acid dye such as EB or YeaRed, and observe the electrophoretic results under UV light.



GoldBand™ 100bp DNA ladder

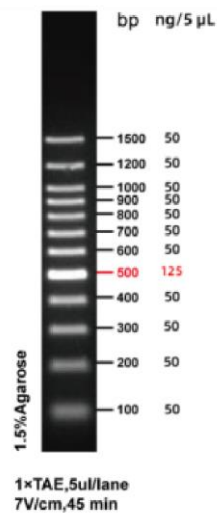


Figure 1. The electrophoretogram of GoldBand™ 100bp DNA ladder

Notes

1. The product needs to be fully mixed when using. Please replace the electrophoresis buffer frequently and use the new prepared gel to achieve the ideal electrophoresis result.
2. The attached 5 \times DNA Loading buffer can be used for sample detection.
3. If there are unsatisfactory conditions such as smear, unclear or curved fragments when using this product for electrophoresis, it's recommended to try to dilute the sample before loading. For example, the sample can be diluted 5 times with water and then take 8-10 μ L for loading for conventional gel wells.
4. Please wear the necessary PPE, such lab coat and gloves, to ensure your health and safety!